

**Exhibit B**

**Survey**

This exhibit has been amended from the original October 29, 2015 application submission to limit the scope of the exhibit to 1918-1920 Sansom Street.

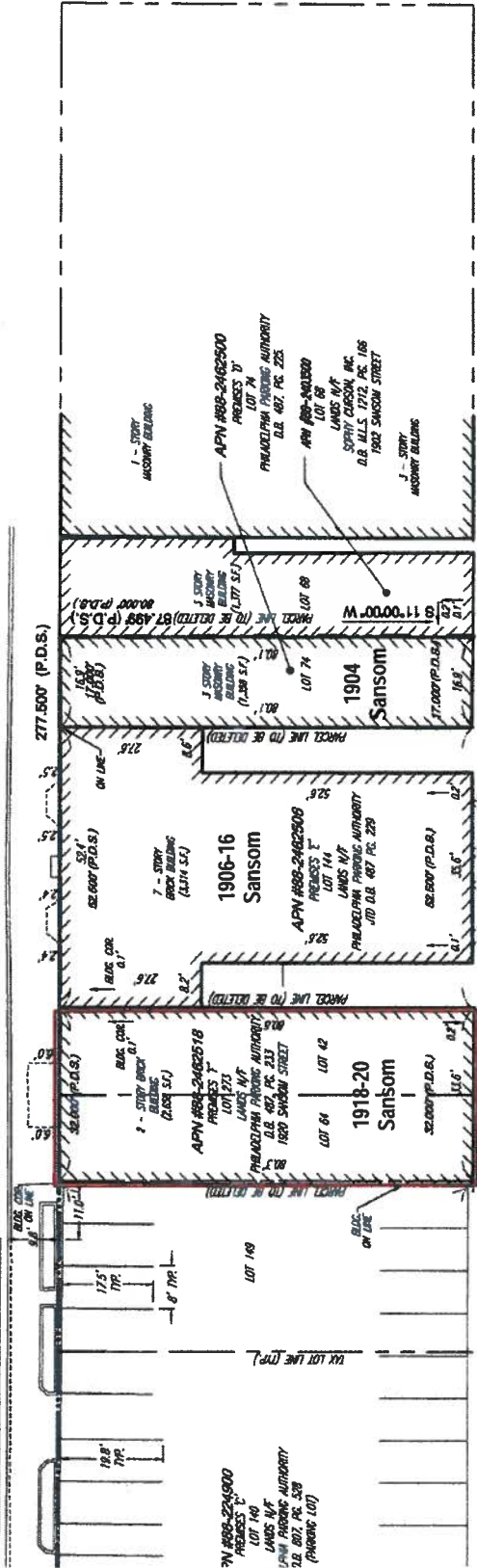
# SANSOM STREET

(F.K.A. GEORGE ST.)

(40' WIDE R.O.W.) (10'-20'-10')

(USUALLY OPEN-UNITED 10' (20' PER REF. 3)

(ASPHALT ROADWAY)



# 19TH STREET

(90' WIDE R.O.W.) (12'-26'-12')

(ASPHALT ROADWAY)

# MORAVIAN STREET

(F.K.A. PORCELAIN ST.)

(15' WIDE ROW) (4'-3'-6'-4'-3')

(USUALLY OPEN-UNITED 10' (20' PER REF. 6)

(ASPHALT ROADWAY)

