

Philadelphia Parks & Recreation

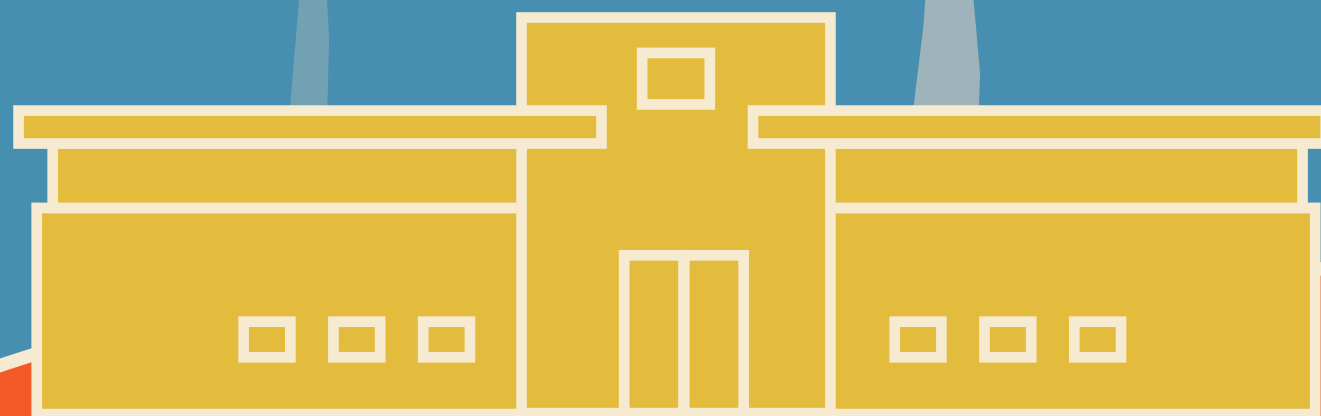
SPRING OPEN HOUSE

SATURDAY, MAY 18 | 10:00AM-1:00PM

Brought to you by your local Advisory Council and Staff

at participating Recreation Centers

- Belfield
- Boyle
- Bridesburg
- Clemente
- D. Finnegan
- DiSilvestro
- Disston
- Dorsey
- Emanuel
- Feltonville
- Finley
- F.J. Myers
- Francisville
- Gathers
- Gifford
- Guerin
- Heitzman
- Holmesburg
- Houseman
- Houston
- Kendrick
- Kingsessing
- Lawncrest
- Lloyd Hall
- Martin Luther King
- Mayfair
- McVeigh
- Mill Creek
- Olney
- Piccoli
- Rivera
- Scanlon
- Shepard
- Shissler
- Shot Tower
- Smith
- Tarken
- American Legion
- Vogt
- Wright



For additional information, contact the recreation center closest to you, or visit www.phila.gov/parksandrecreation.



PHILADELPHIA
**PARKS &
RECREATION**